

# Innovating the Future of RV POWER

## WF-68100AD DECK MOUNT CONVERTER CHARGER SERIES



Eco-Friendly

# POWER

with **AUTO-DETECT**

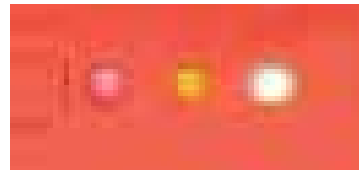
Model WF-68100AD - Output: 100 amps DC - Input: 105-130 V AC, 60 Hz, 1710W

The WF-68100AD Deck Mount Converter charger now includes an industry-first Auto-Detect technology. This new microprocessor-driven technology will recognize Lithium-Ion and Lead-Acid battery chemistries and automatically adjust the charging profile to match the battery type. Power Factor Correction requires 30% less input, making the WF-68100AD an eco-friendly 12 Volt system.

No more buttons. No more switches.

An accurately charged battery gives RV owners peace of mind. Eliminating the risk of over and under-charging the WF-68100AD will maximize your battery life with multi-stage charging and current monitoring in both Lead-Acid and Lithium-Ion profiles.

### PRODUCT FEATURES



LED Performance Lights allow RV owners to easily see when the converter is operating correctly or when there's a problem, providing more safety and diagnostic information to technicians and RV owners.

- **Red** - lights up when your converter is overloaded.
- **Green** - lights up when your converter is in charging mode.
- **Amber** - lights up when your unit is off and connected to full battery/flickers when approaching low charge.



Power Factor Correction reduces the amount of input power by up to 30% for total output, making this one of the most energy-efficient converters available.



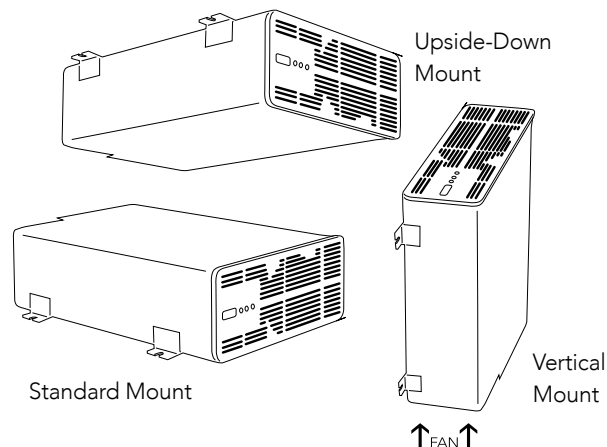
## THE BATTERY GUARDIAN™

The WF-68100AD Series is designed with optimized charging for battery chemistry in the unit. For Lead-Acid Batteries, WFCO's automatic three-stage converter handles every charging need for the RV while extending the battery's life. For Lithium-Ion Batteries, the multistage process ensures a safe operating voltage for all loads, replaces energy in the battery, and assures the Lithium-Ion cells inside the battery remain balanced. See [wfcoelectronics.com](http://wfcoelectronics.com) for details.



## EASY INSTALLATION

WFCO works with installers every day to streamline installation and reduce time



WFCO recommends horizontal mounting of the WF-68100AD series. You can mount it in any position that provides unobstructed ventilation for the fan and vent holes.

WFCO makes fully insulated connections for protection with an open-top design for ease of use for fast and nearly effortless installation.

SPECIFICATIONS	WF-68100AD
Power Input	1710 W
Input Voltage	105 V AC - 130 V AC / 60 Hz
Output Current (LA/LI)	100 A
Power Factor Correction	Unity (0.99)
Efficiency	84% (VA value under full load)
Converter Type (LA/LI)	3 Stage Converter Charger / 2 Stage Converter
Voltage Output (LA/LI)	13.2 - 14.4 V DC / 13.6-14.6 V DC
Normal mode	13.6 V DC
Trickle charge mode (LA Only)	13.2 V DC
Bulk charge mode	14.4 V DC / 14.6 V DC
Outer Dimensions	9 3/4"W x 13 1/2"L x 3 3/4"H
Weight	10.25 lb
Certifications: UL® and cUL® listed and FCC Class B compliant. Specifications are subject to change without notice or obligation.	

### ALL MODELS STANDARD SAFETY FEATURES PROTECTIONS

Over Current, Over Temperature,  
Over Voltage, Reverse Polarity

### INSTALLATION

Case Material: Metal  
Color: Two-tone Gray and Orange



**EXPERT PRODUCT SUPPORT**  
Our Power Pros provide expert technical support for everything the RV industry needs.  
Visit [wfcoelectronics.com/support](http://wfcoelectronics.com/support).